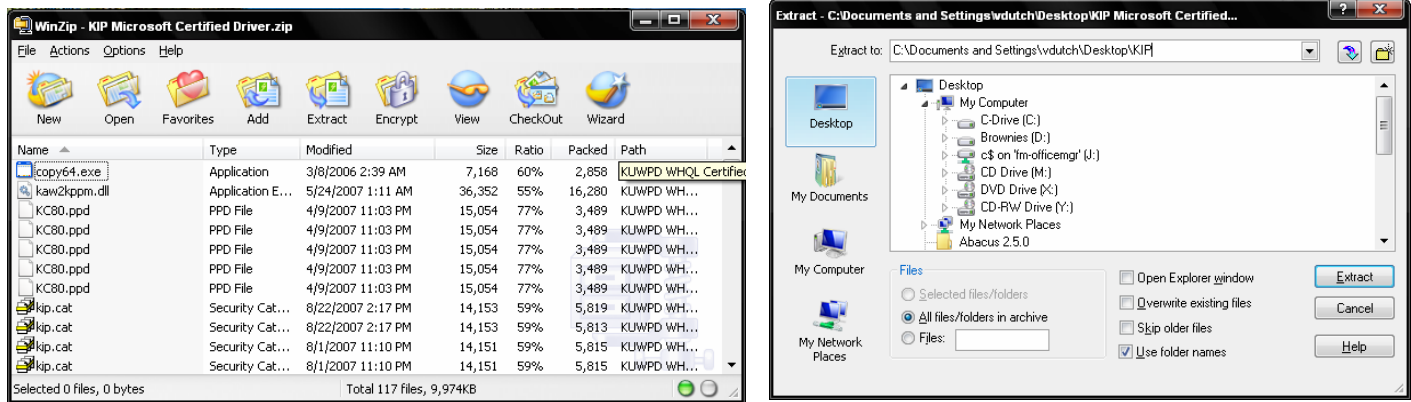
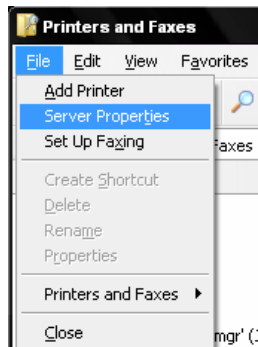


## KIP Driver Installation

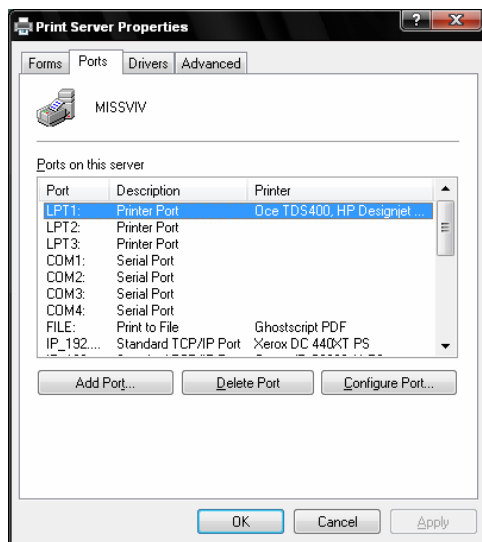
1. Go to <http://onsite.browniesrepro.com/drivers.htm> and download the latest KIP drivers.
2. Unzip the driver file to the desktop.



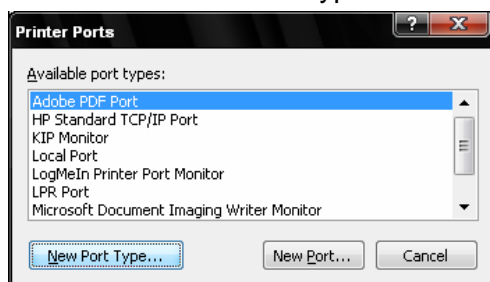
3. Open the Printers & Faxes window. We will be creating the KIP0 port.
  - a. Go to File → Server Properties



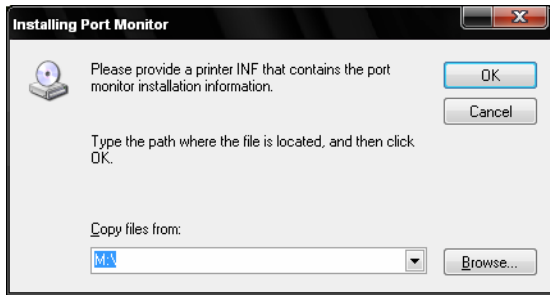
- b. Go to the Ports tab and click on the Add Ports button.



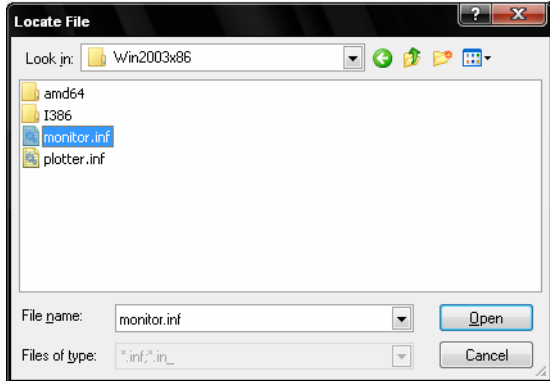
- c. Click on the New Port Type button.



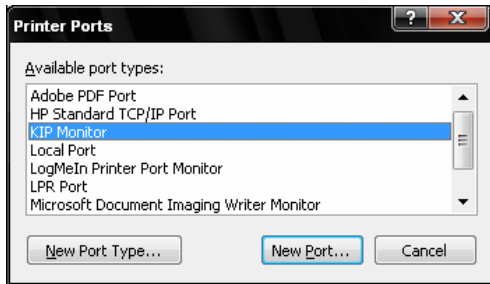
d. Browse to the desktop, where you unzipped the driver.



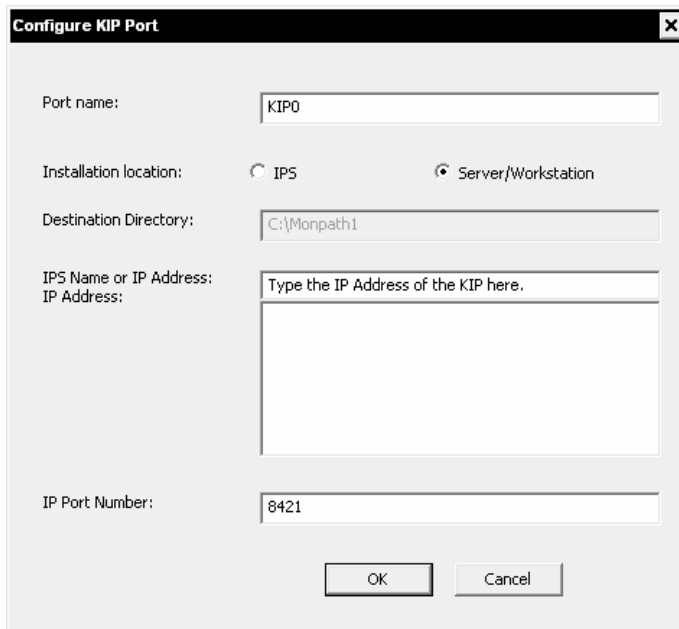
e. Depending on the operating system of their print server (Win2003x86, more than likely), open the driver folder and choose the "monitor.inf" file, click open and then OK.



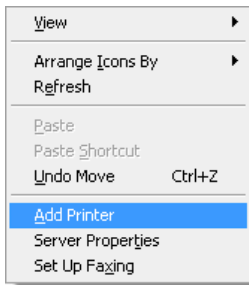
f. Choose the KIP Monitor port and click the New Port... button.



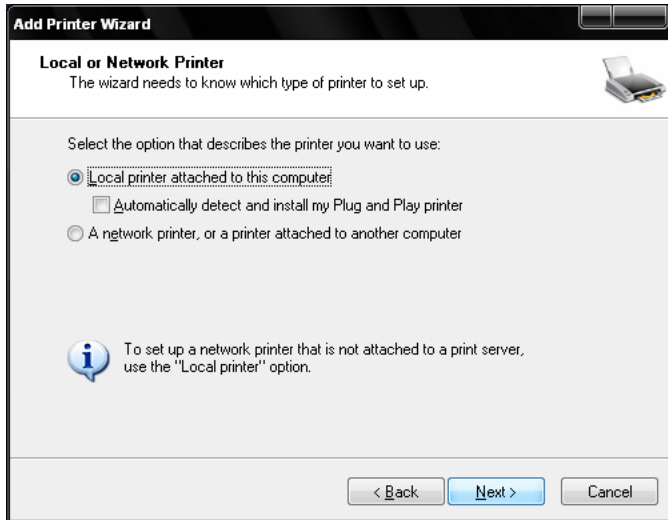
g. Type the IP address of the KIP in the space provided and then click OK. This will create the KIP0 port. Click Close and OK to exit out of the Server Properties.



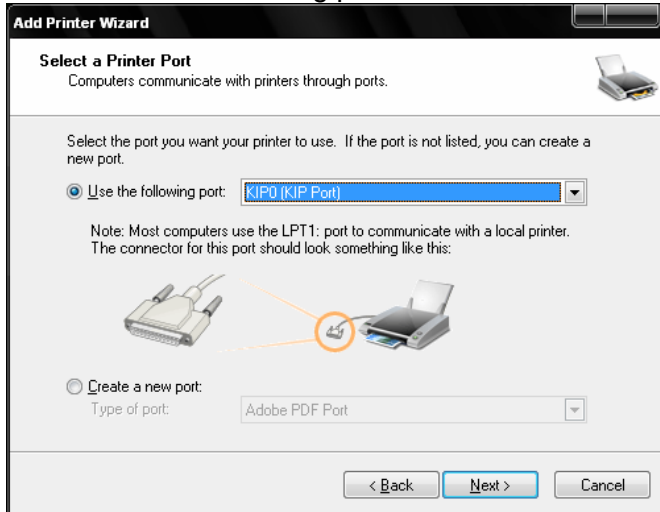
4. In the Printers & Faxes window, right click and choose Add Printer.



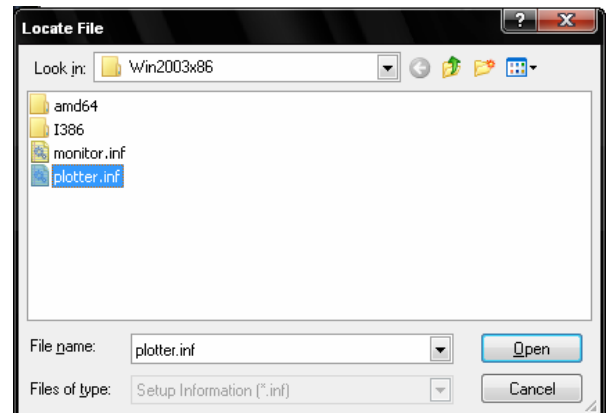
a. Click Next. Then, make sure it is on “Local printer attached to this computer” and that “Automatically detect and install my Plug and Play printer” is unchecked. Click Next.



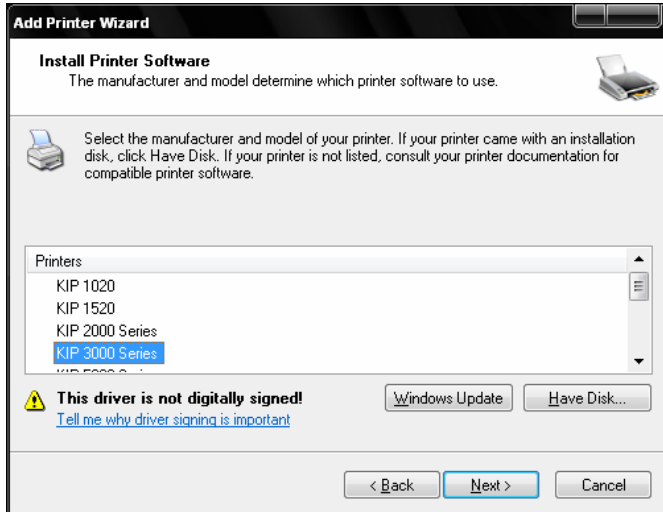
b. Select “Use the following port:” and choose the KIP0 (KIP Port) from the list. Click Next.



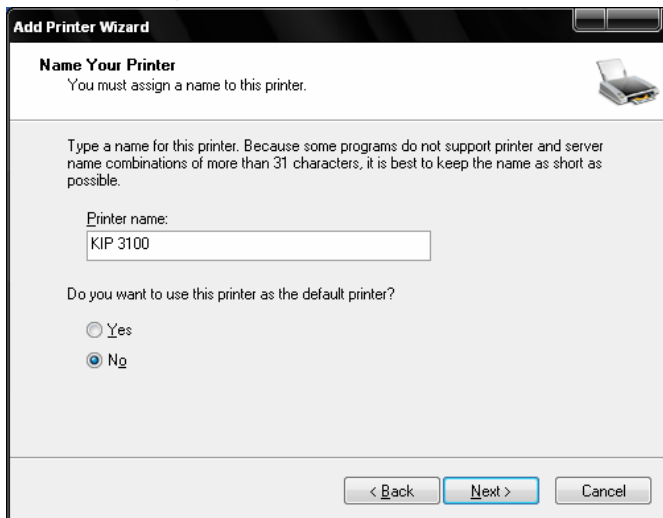
c. Click on the Have Disk button and click Browse. It should take you to the folder you had opened when you created the KIP0 port. Choose the “plotter.inf” file, click open and then OK.



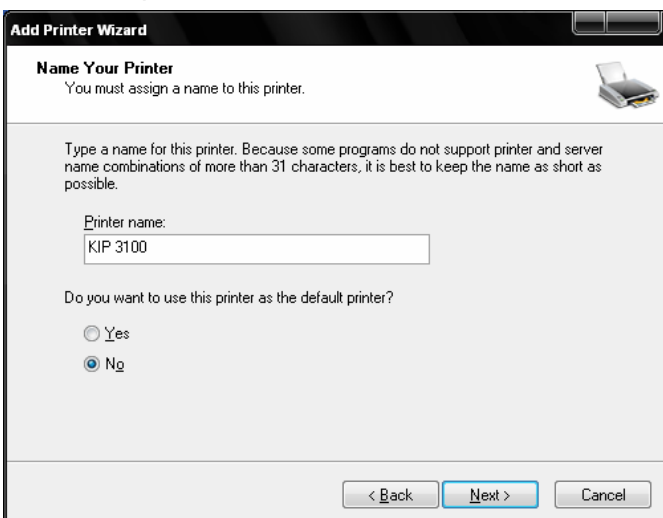
- d. Select the KIP 3000 Series from the list. Click Next.



- e. Rename the printer to KIP 3100. Click Next.



- f. Share the printer out with the share name KIP3100. Click Next.



- g. Click Next for the Location and Comment screen.  
h. Print a test page if you'd like. Click Next.  
i. Click Finish. The printer is now installed and shared out to the user's. From the user's computer, go to Start → Run..., type "\\SERVERNAME\KIP3100" without the quotes, and click OK. This will install the printer drivers.